



# Modernize your IBM i and IBM z/OS screens and workflows

### KEY BENEFITS



No change in the source code



No component to install on the mainframe



Automated documentation with screenshots



Fast transformation in a few hours



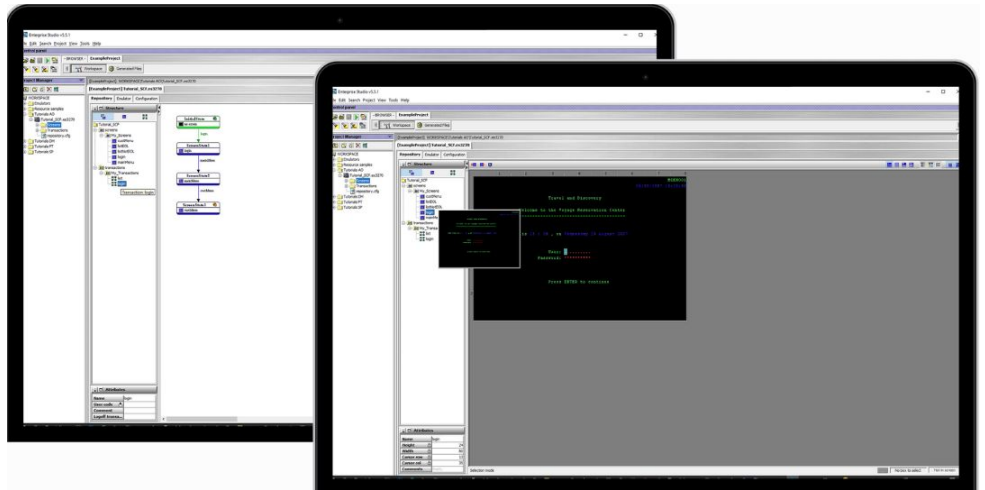
Continuous integration thanks to APIs for automated RPA testing

Mainframe Integrator Suite’s Enterprise Studio is a Java Software Development Environment (SDE). Designed as a Graphic User Interface (GUI), it provides an user-friendly and intuitive interface to automatically generate Java components

Connect easily legacy with new technologies and uses: Revamping, UI/UX Responsive Design, BYOD, mobility, SOA, RPA, REST APIs & Web Services!

### Technical features

<b>midrange and mainframe OS</b>	IBM i (AS/400, iSeries, System i) , IBM z/OS
<b>workstation OS</b>	Windows, Unix, Linux
<b>legacy source code</b>	COBOL, RPG
<b>programming languages</b>	Java



### Graphic design IDE Enterprise Studio

Select, drag and drop the mainframe screens to design new workflows

### Test Enterprise Studio on our free live demo platform!

Just enter your email address to access screen & services transformation demos, from simple automatic conversion to more complex and customized solutions.

See for yourself how Enterprise Studio can transform your legacy apps.



Silver Business Partner



Mainframe Integrator Suite is listed in IBM Global Solution Directory





## BUSINESS CASE

**Background:**  
Innovation department in a major insurance group.

### Mission:

- Revamping a Cobol application on an iPad tablet and integration with Salesforce CRM with SSO and multi-session.
- Framework front-end is implemented in Angular JS.

### Special requests:

- Reduced time-to-market for excellent customer satisfaction
- A moderate budget

### Results:

- **Delivery in just 3 months**, instead of 2 years for a full rewrite
- **92% savings** compared to a full rewrite (80k EUR instead of 1 M EUR)

## Enterprise Studio main features

<b>Terminal Editor</b>	Capture and edit screens and transactions, testing before deployment
<b>Terminal Emulator</b>	Simulate mainframe browsing TN3270, TN5250
<b>Virtual Server</b>	Mainframe simulator providing flows compatible with the various protocols supported by Mainframe Integrator Suite products (in phase with the WebApps demonstration)
<b>Smart Publishing/Smart Publishing Advanced</b> <span style="background-color: orange; color: white; padding: 2px;">API</span>	Green screen modernization and revamping for improved UI design and user experience
<b>Publishing Accelerator</b>	Eclipse plugin to graphically reshape the rendering of the mainframe screen, relying on the Smart Publishing module. Advanced revamping thanks to smart widgets like Pyjamas
<b>JSP Designer</b>	Equivalent to Publishing Accelerator for Fastrack (Swing)
<b>AccessObject</b> <span style="background-color: orange; color: white; padding: 2px;">API</span>	Workflow modernization for improved user experience and efficiency
<b>Traffic Player</b>	To record and replay Telnet streams TN3270, TN5250
<b>AO Player</b>	Build screen-mode workflows from Enterprise Studio screenshots . Allows you to replay Access Objects scenarios and perform benchmarks.
<b>Call Out</b>	Call of external Web Services from mainframe applications by generating COBOL and RPG copybooks
<b>Data Mapper</b>	Direct access to legacy business logic and SOA to develop Java applications

More information on technical features, Web Services & demos available on the Mainframe Integrator Suite website

Visit MIS website

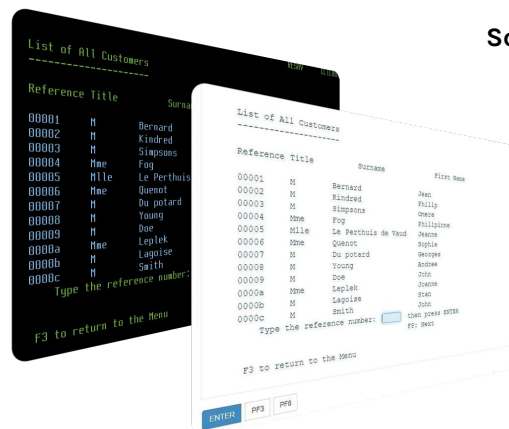


Metrixware Systemobjects S.A.S  
phone: +33 1 55 69 32 20  
sales@metrixware.com  
www.metrixware.com

Headquarter:  
9 Avenue Henri Pétonnet  
86370 Vivonne - France

Sales and administration:  
Les Collines de L'Arche  
Immeuble Opéra E  
76 Route de la Demi-Lune  
92057 Paris La Défense - France

**Screen & workflow modernization**  
Combine Smart Publishing and Access Object features for an improved user experience



Metrixware Systemobjects is a French Independent Software Vendor (ISV). Since 1991, we have been developing modernization solutions to improve the connectivity of your critical business applications and the productivity of your programming tools. Trusted around the world by major players in the bank, insurance, industries, IT and public services, we aim to offer a quick and smooth bridge between your legacy infrastructures and latest IT trends, making software developments easier for your teams.

Document N°MI006-1-0922 Edition: September 2022

Data in this document is subject to change without notice and becomes contractual only after written confirmation.

© Copyright 1991-2022 Metrixware Systemobjects. All Rights Reserved www.metrixware.com  
Photo credits: Metrixware Systemobjects