



Mainframe Integrator Suite **IBM i**

Simply connect your IBM i systems with the latest technologies

The middleware solution to modernize your IBM i apps

KEY BENEFITS



No change in the source code



No component to install on the mainframe



Automated documentation with screenshots



Fast transformation in a few hours



Continuous integration thanks to APIs for automated RPA testing

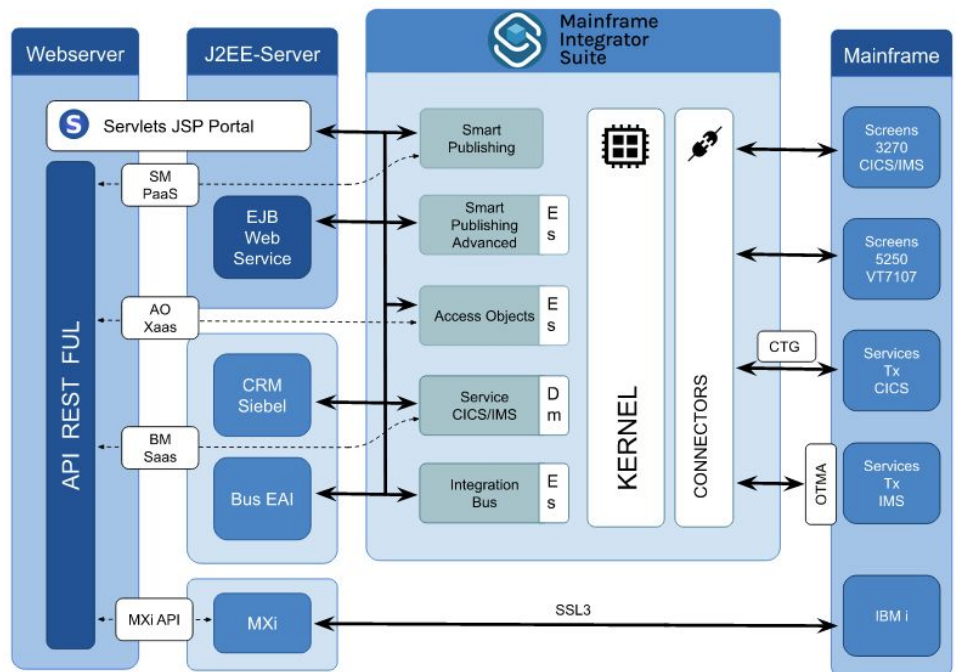
Mainframe Integrator Suite for IBM i is a mature and efficient connectivity solution to connect legacy midrange systems with new technologies and uses: Revamping, UI/UX Responsive Design, BYOD, mobility, SOA, RPA, REST APIs & Web Services, IA bots, 3rd party apps (BI, CRM, BPM,...)

Accelerate innovation and boost the power of your IBM i midrange systems!

Technical features

midrange OS	IBM i (AS/400, iSeries, System i)
workstation OS	Windows, Linux
legacy source code	COBOL, RPG
programming languages	Java, Python, Ruby, PHP, .Net, Node.js, C/C++, Delphi

Mainframe Integrator Suite architecture



Silver
Business
Partner



Mainframe Integrator Suite is listed in IBM Global Solution Directory



Contact us

Visit MIS website



BUSINESS CASE

Background:

Innovation department in a major insurance group.

Mission:

- Revamping a Cobol application on an iPad tablet and integration with Salesforce CRM with SSO and multi-session.
- Framework front-end is implemented in Angular JS.

Special requests:

- Reduced time-to-market for excellent customer satisfaction
- A moderate budget

Results:

- **Delivery in just 3 months**, instead of 2 years for a full rewrite
- **92% savings** compared to a full rewrite (80k EUR instead of 1 M EUR)

More information on technical features, Web Services & demos available on the Mainframe Integrator Suite website

[Visit MIS website](#)



Metrixware Systemobjects S.A.S
phone: +33 1 55 69 32 20
sales@metrixware.com
www.metrixware.com

Headquarter:
9 Avenue Henri Pétonnet
86370 Vivonne - France

Sales and administration:
Les Collines de L'Arche
Immeuble Opéra E
76 Route de la Demi-Lune
92057 Paris La Défense - France

Technical modules

Enterprise Studio: Graphic design IDE for Java developers

Smart Publishing & Smart Publishing Advanced: Green screen modernization and revamping for web browser

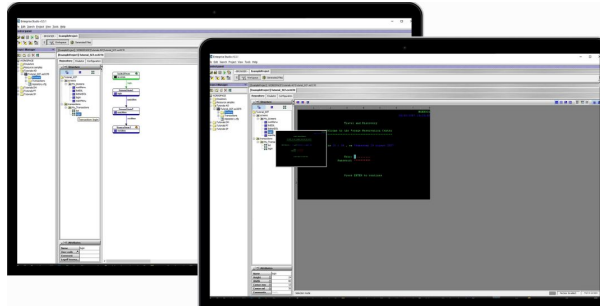
AccessObject: Workflow modernization

Call-Out: Call of external Web Services from COBOL and RPG legacy languages

DataMapper: Direct access to legacy business logic to develop Java applications. Works with CICS connector

Traffic Player: to record and replay Telnet streams TN5250

MXi wrappers: Modernization of IBM i legacy applications using latest programming languages: Delphi, .Net, Java, Python, Ruby, PHP, Node.js, C/C++



Graphic design IDE
Enterprise Studio
Design new flows.
Select, drag and drop the screens.

REST APIs

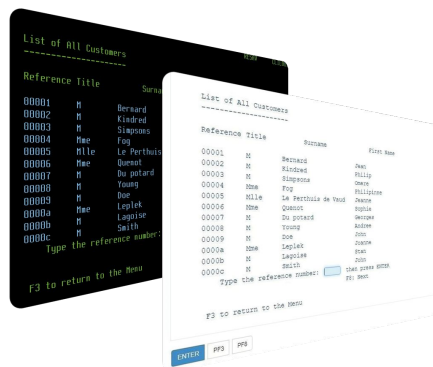
SMPaaS: Smart Publishing as a Service: Green screen revamping and modernization

AOXaaS: Access Object eXecution as a Service: Screen workflow modernization

BMSaaS: Basic Mapping Support (BMS) as a Service: execute BMS files containing IBM CICS screens' definition. Works with CICS connector

MXi APIs: a set of Web Services to execute local commands on the IBM i: call remote programs, invoke remote commands, manage the spool ...

RPA integration packages (UiPath) available on the website!



Screen & workflow modernization
Combine Smart Publishing and Access Object features for an improved user experience

Metrixware Systemobjects is a French Independent Software Vendor (ISV). Since 1991, we have been developing modernization solutions to improve the connectivity of your critical business applications and the productivity of your programming tools. Trusted around the world by major players in the bank, insurance, industries, IT and public services, we aim to offer a quick and smooth bridge between your legacy infrastructures and latest IT trends, making software developments easier for your teams.

Document N°MI002-1-0922 Edition: September 2022

Data in this document is subject to change without notice and becomes contractual only after written confirmation.

© Copyright 1991-2022 Metrixware Systemobjects. All Rights Reserved www.metrixware.com
Photo credits: Metrixware Systemobjects